

**BALDOR • RELIANCE**

---

# Customer information packet

## JL3513A

1.5HP, 3450RPM, 1PH, 60HZ, 56J, 3528L, TEFC, F1  
MDS OF MICHIGAN INC  
Class - None  
Division - Not Applicable

## Specifications

Enclosure	TEFC
Frame	56J
Frame Material	Steel
Frequency	60.00 Hz
Haz Area Class and Group	None
Haz Area Division	Not Applicable
Motor Letter Type	Cap Start, Induction Run
Output @ Frequency	1.500 HP @ 60 HZ
Phase	1
Synchronous Speed @ Frequency	3600 RPM @ 60 HZ
Voltage @ Frequency	115.0 V @ 60 HZ 230.0 V @ 60 HZ
Agency Approvals	UR CSA
Ambient Temperature	40 °C
Auxillary Box	No Auxillary Box
Auxillary Box Lead Termination	None
Base Indicator	No Mounting
Bearing Grease Type	Polyrex EM (-20F +300F)
Blower	None
Current @ Voltage	16.600 A @ 115.0 V 8.300 A @ 230.0 V 8.600 A @ 208.0 V
Design Code	L
Drip Cover	No Drip Cover
Duty Rating	CONT
Efficiency @ 100% Load	70.0 %
Electrically Isolated Bearing	Not Electrically Isolated
Feedback Device	NO FEEDBACK
Front Face Code	Standard
Front Shaft Indicator	None
Heater Indicator	No Heater

## Part detail

Revision	BK
Type	AC
Mech. spec.	35F083
Base	
Status	PRD/A
Elec. spec.	35WG0525
Layout	35LYF083
Eff. date	10-10-2024
CD Diagram	CD0094
Poles	02
Leads	4#16 A&J,1#14 #4TH
Proprietary	False
Created date	06-21-2007

High Voltage Full Load Amps	8.3 a
Insulation Class	F
Inverter Code	Not Inverter
KVA Code	H
Lifting Lugs	No Lifting Lugs
Locked Bearing Indicator	Locked Bearing
Motor Lead Exit	Ko Box
Motor Lead Quantity/Wire Size	4 @ 16 AWG, A&J
Motor Lead Termination	Flying Leads
Motor Standards	NEMA
Motor Type	3528L
Mounting Arrangement	F1
Number of Poles	2
Overall Length	13.74 IN
Power Factor	82
Product Family	General Purpose
Pulley End Bearing Type	Ball
Pulley Face Code	C-Face
Pulley Shaft Indicator	Ext Thread
Rodent Screen	None
RoHS Status	ROHS COMPLIANT
Service Factor	1.00
Shaft Diameter	0.625 IN
Shaft Extension Location	Pulley End
Shaft Ground Indicator	No Shaft Grounding
Shaft Rotation	Fixed Opposite Standard
Shaft Slinger Indicator	No Slinger
Speed	3450 rpm
Speed Code	Single Speed
Starting Method	Direct on line
Thermal Device - Bearing	None
Thermal Device - Winding	Do Not Use Eve-Not Valid
Vibration Sensor Indicator	No Vibration Sensor
Winding Thermal 1	Automatic Thermal Overload

**Winding Thermal 1 Location**

**SB**

**Winding Thermal 2**

**None**

**Nameplate**

<b>NP1257L</b>									
<b>CAT.NO.</b>	JL3513A								
<b>SPEC.</b>	35F83-525								
<b>HP</b>	1.5								
<b>VOLTS</b>	115/230								
<b>AMP</b>	16.6/8.3								
<b>RPM</b>	3450								
<b>FRAME</b>	56J			<b>HZ</b>	60		<b>PH</b>	1	
<b>SER.F.</b>	1.00	<b>CODE</b>	H	<b>DES</b>	L	<b>CL</b>	F		
<b>NEMA-NOM-EFF</b>	70	<b>PF</b>	82						
<b>RATING</b>	40C AMB-CONT								
<b>CC</b>									
<b>DE</b>	6205	<b>ODE</b>	6203						
<b>ENCL</b>	TEFC	<b>SN</b>							

## Parts list

Part number	Description	Quantity
SA024900	SA 35F83-525	1.000 ea
RA020950	RA 35F83-525	1.000 ea
EC1645A06SP	ELEC CAP, 645-774 MFD, 125V, 2.06D X 4.	1.000 ea
NS2512A01	INSULATOR, CONDUIT BOX X	1.000 ea
35CB3007	35 CB CASTING W/.88 DIA. LEAD HOLE	1.000 ea
36GS1000SP	GASKET-CONDUIT BOX, .06 THICK #SV-330 LE	1.000 ea
51XB1016A07	10-16 X 7/16 HXWSSLD SERTYB	2.000 ea
11XW1032G06	10-32 X .38, TAPTITE II, HEX WSHR SLTD U	1.000 ea
35EP3122K00	MASTER ODE,203 BRG,.683SH,#26 DRN,FH MTG	1.000 ea
51XW0832A07	8-32 X .44, TAPTITE II, HEX WSHR SLTD SE	2.000 ea
85XU0407S04	4X1/4 U DRIVE PIN STAINLESS	2.000 ea
51XB1016A05	10-16X5/16HX WA SL SR TYB (F/S)	2.000 ea
HW5100A03	WAVY WASHER (W1543-017)	1.000 ea
35EP3307G00	MASTER DE,205 BRG,1.232SH,#26 DRN	1.000 ea
51XN1032A20	10-32 X 1 1/4 HX WS SL SR	2.000 ea
51XB1214A16	12-14X1.00 HXWSSLD SERTYB	1.000 ea
35FH4005A55	IEC FH NO GRSSR,3 MTG HOLE NO DIMPLES,	1.000 ea
51XW1032A06	10-32 X .38, TAPTITE II, HEX WSHR SLTD S	3.000 ea
WD4100A10	465 NIAGARA PLUG (SO ELEC),FOR 1.093 DIA	1.000 ea
35CB4521GX	CONDUIT BOX LID KIT **ORDER INDIV PARTS	1.000 ea
51XW0832A07	8-32 X .44, TAPTITE II, HEX WSHR SLTD SE	4.000 ea
WD1000A15	3-520132-2 AMP FLAG (4M/RL NON-CANC/NON-	2.000 ea
MJ1000A02	GREASE, POLYREX EM EXXON	0.050 lb
34FN3002A01SP	EXTERNAL FAN, PLASTIC, .637/.639 HUB W/	1.000 ea
MG1050G01	CELEROL MEDIUM CHARCOAL METALLIC GRAY	0.017 ga
SP5051A99	MODEL 34/35 TORQ STA SW LEAD CONFIG	1.000 ea
HA3100A15	THRUBOLT 10-32 X 8.375	4.000 ea
LB1118	LABEL,WARNING (ROLL LABEL)	1.000 ea
LB1009N	LABEL,ROTATION DIRECTION (ON ROLLS)	1.000 ea
35CB4802A02SP	CAPACITOR COVER, STAMPED X	1.000 ea
35GS3001A02	GASKET, CA.COVER, 5.38 LONG .06 CS301	1.000 ea

LC0031	CONNECTION LABEL	1.000 ea
NP1257L	ALUM UL CC THERMAL REV MTG	1.000 ea
35PA1066	PKG GRP, PRINT PK1008A06	1.000 ea
PK3083	STYROFOAM PACKING CRADLE	1.000 ea
PK3088	MICROFOAM, 8"X"8 PERF. SHEETS	1.000 ea
FE-0000001	ZRTG FE ASSEMBLY	1.000 ea
PE-0000001	ZRTG PE ASSEMBLY	1.000 ea

**AC Induction Motor Performance Data**

Record # 61781

Typical performance - not guaranteed values

Winding: 35WG0525-R005		Type: 3528L		Enclosure: TEFC	
<b>Nameplate Data</b>			<b>230 V, 60 Hz: High Voltage Connection</b>		
Rated Output (HP)	1.5		Full Load Torque	2.3 LB-FT	
Volts	115/230		Start Configuration	direct on line	
Full Load Amps	16.6/8.3		Breakdown Torque	5.6 LB-FT	
R.P.M.	3450		Pull-up Torque	4.2 LB-FT	
Hz	60 Phase	1	Locked-rotor Torque	5.5 LB-FT	
NEMA Design Code	L KVA Code	H	Starting Current	42 A	
Service Factor (S.F.)	1		No-load Current	3.8 A	
NEMA Nom. Eff.	70 Power Factor	82	Line-line Res. @ 25°C	1.26 Ω A Ph 1.23 Ω B Ph	
Rating - Duty	40C AMB-CONT		Temp. Rise @ Rated Load	70°C	

**Load Characteristics 230 V, 60 Hz, 1.5 HP**

% of Rated Load	25	50	75	100	125	150
Power Factor	52	69	78	84	87	88
Efficiency	54.9	67.7	71.6	72.4	71.2	68.4
Speed	3568	3543	3518	3485	3452	3409
Line amperes	4.4	5.4	6.6	8.3	9.9	12

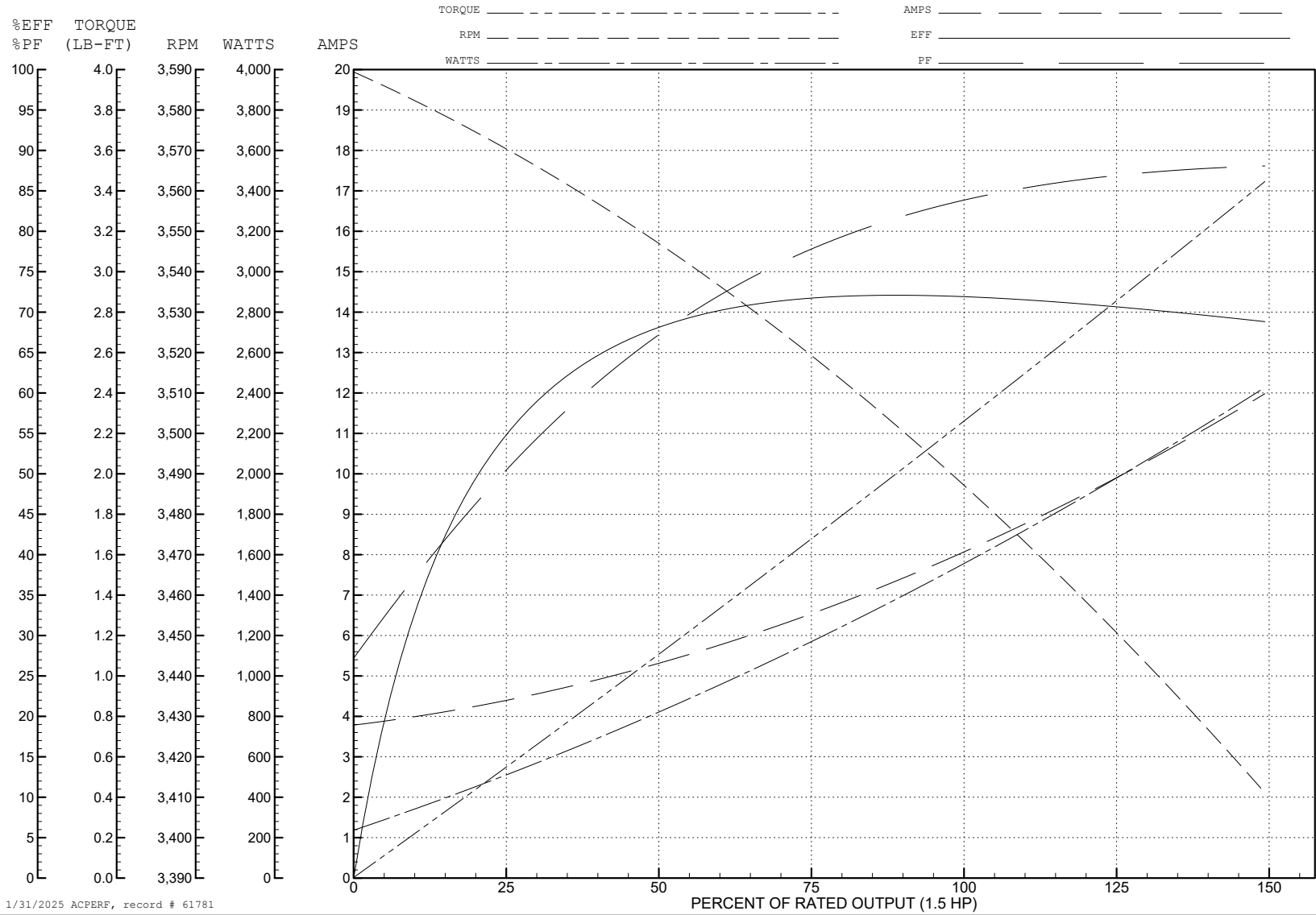
ABB Motors and Mechanical Inc.

WINDING # 35WG0525

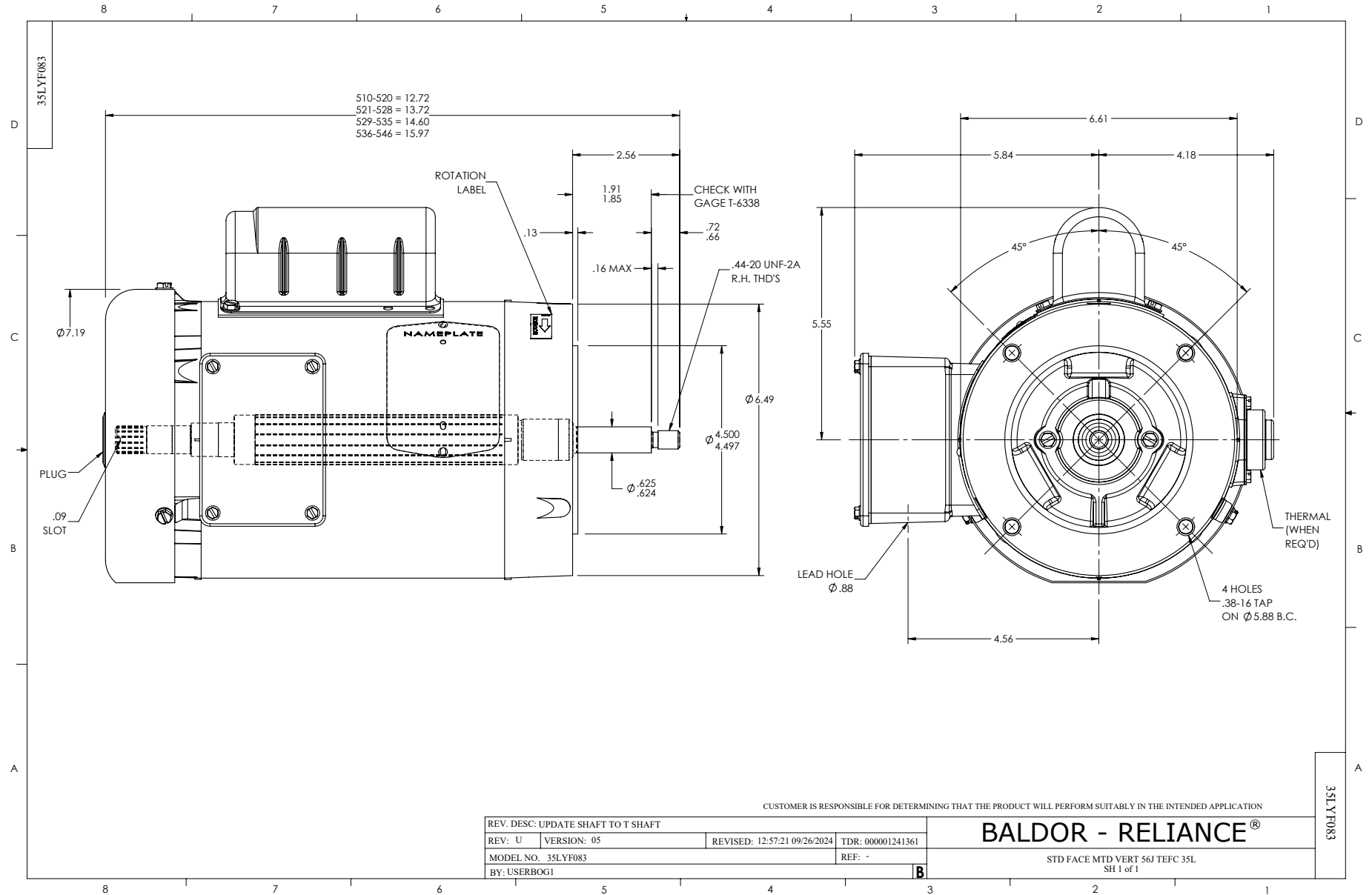
Typical performance - not guaranteed values.

1.5 HP 1 PH 60 HZ 3450 RPM 230 V 3528L

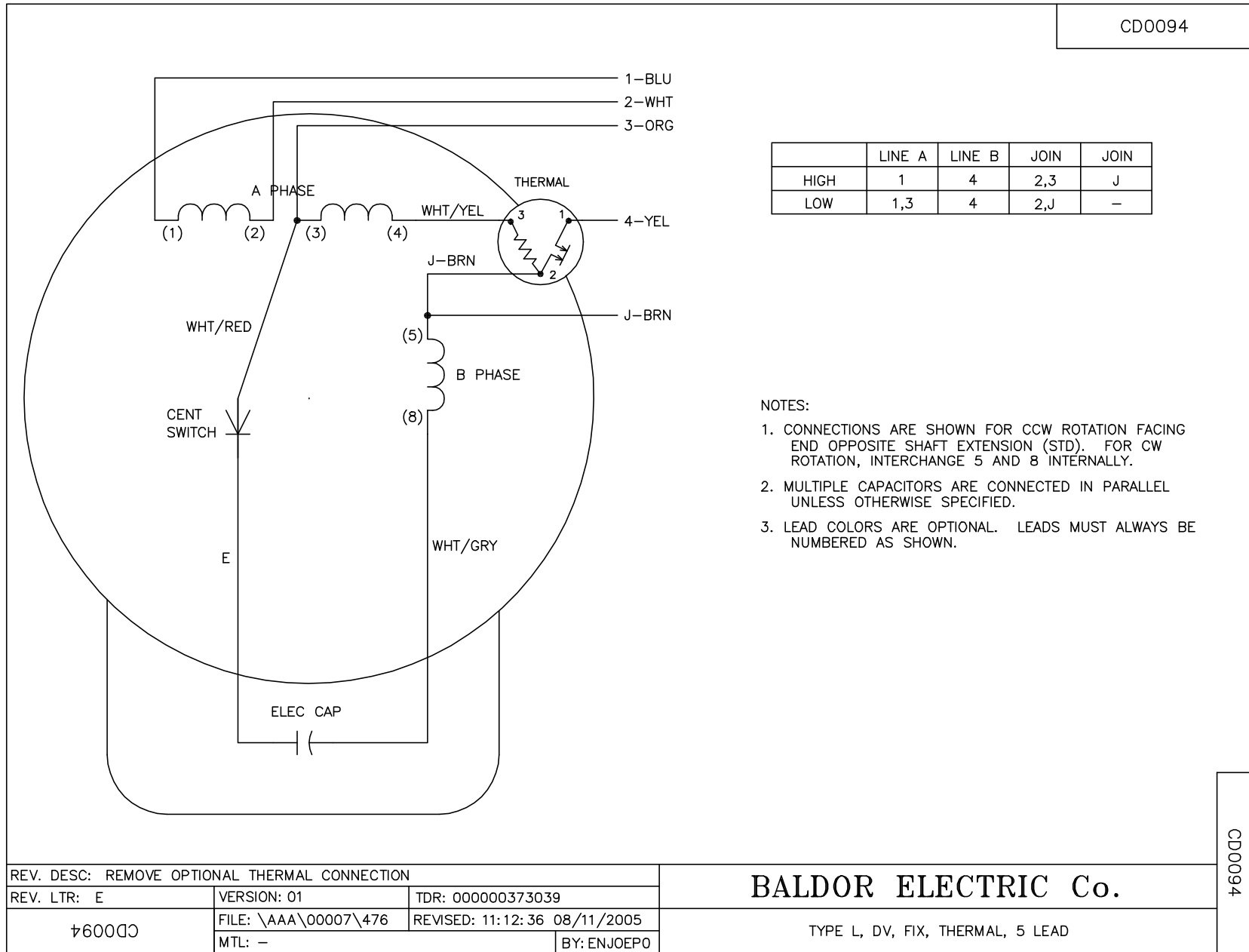
TORQUES (LB-FT): PO=5.6 PU=4.2 LR=5.5 LRA=42



1/31/2025 ACPERF, record # 61781



CD0094



REV. DESC: REMOVE OPTIONAL THERMAL CONNECTION		
REV. LTR: E	VERSION: 01	TDR: 000000373039
CD0094	FILE: \AAA\00007\476	REVISED: 11:12:36 08/11/2005
	MTL: -	BY: ENJOEPO

**BALDOR ELECTRIC Co.**

TYPE L, DV, FIX, THERMAL, 5 LEAD

CD0094