

**BALDOR • RELIANCE**

---

# Customer information packet

## JL3405A

.33HP, 3450RPM, 1PH, 60HZ, 56J, 3416L, TEFC, F1

MDS OF MICHIGAN INC

Class - None

Division - Not Applicable

## Specifications

Enclosure	TEFC
Frame	56J
Frame Material	Steel
Frequency	60.00 Hz
Haz Area Class and Group	None
Haz Area Division	Not Applicable
Motor Letter Type	Cap Start, Induction Run
Output @ Frequency	.330 HP @ 60 HZ
Phase	1
Synchronous Speed @ Frequency	3600 RPM @ 60 HZ
Voltage @ Frequency	115.0 V @ 60 HZ 230.0 V @ 60 HZ
Agency Approvals	CSA UR
Ambient Temperature	40 °C
Auxillary Box	No Auxillary Box
Auxillary Box Lead Termination	None
Base Indicator	No Mounting
Bearing Grease Type	Polyrex EM (-20F +300F)
Blower	None
Current @ Voltage	6.000 A @ 115.0 V 3.000 A @ 230.0 V 3.000 A @ 208.0 V
Design Code	N
Drip Cover	No Drip Cover
Duty Rating	CONT
Electrically Isolated Bearing	Not Electrically Isolated
Feedback Device	NO FEEDBACK
Front Face Code	Standard
Front Shaft Indicator	None
Heater Indicator	No Heater
High Voltage Full Load Amps	3.0 a

## Part detail

Revision	Y
Type	AC
Mech. spec.	34-3099
Base	
Status	PRD/A
Elec. spec.	34WGX609
Layout	34LY3099
Eff. date	11-06-2024
CD Diagram	CD0094
Poles	02
Leads	4#18 A&J,1#16 #4TH
Proprietary	False
Created date	01-01-0001

<b>Insulation Class</b>	B
<b>Inverter Code</b>	Not Inverter
<b>KVA Code</b>	M
<b>Lifting Lugs</b>	No Lifting Lugs
<b>Locked Bearing Indicator</b>	Locked Bearing
<b>Motor Lead Exit</b>	Ko Box
<b>Motor Lead Quantity/Wire Size</b>	4 @ 18 AWG, A&J
<b>Motor Lead Termination</b>	Flying Leads
<b>Motor Standards</b>	NEMA
<b>Motor Type</b>	3416L
<b>Mounting Arrangement</b>	F1
<b>Number of Poles</b>	2
<b>Overall Length</b>	11.85 IN
<b>Product Family</b>	General Purpose
<b>Pulley End Bearing Type</b>	Ball
<b>Pulley Face Code</b>	C-Face
<b>Pulley Shaft Indicator</b>	Ext Thread
<b>Rodent Screen</b>	None
<b>RoHS Status</b>	ROHS COMPLIANT
<b>Service Factor</b>	1.75
<b>Shaft Diameter</b>	0.625 IN
<b>Shaft Extension Location</b>	Pulley End
<b>Shaft Ground Indicator</b>	No Shaft Grounding
<b>Shaft Rotation</b>	Fixed Opposite Standard
<b>Shaft Slinger Indicator</b>	No Slinger
<b>Speed</b>	3450 rpm
<b>Speed Code</b>	Single Speed
<b>Starting Method</b>	Direct on line
<b>Thermal Device - Bearing</b>	None
<b>Thermal Device - Winding</b>	None
<b>Vibration Sensor Indicator</b>	No Vibration Sensor
<b>Winding Thermal 1</b>	Automatic Thermal Overload
<b>Winding Thermal 1 Location</b>	SB

**Nameplate**

<b>NP1257L</b>									
<b>CAT.NO.</b>	JL3405A								
<b>SPEC.</b>	34-3099X609								
<b>HP</b>	.33								
<b>VOLTS</b>	115/230								
<b>AMP</b>	6/3								
<b>RPM</b>	3450								
<b>FRAME</b>	56J			<b>HZ</b>	60		<b>PH</b>	1	
<b>SER.F.</b>	1.75	<b>CODE</b>	M	<b>DES</b>	N	<b>CL</b>	B		
<b>NEMA-NOM-EFF</b>		<b>PF</b>							
<b>RATING</b>	40C AMB-CONT								
<b>CC</b>									
<b>DE</b>	6203	<b>ODE</b>	6203						
<b>ENCL</b>	TEFC	<b>SN</b>							
	SFA 7.4/3.7								

## Parts list

Part number	Description	Quantity
SA018265	SA 34-3099X609	1.000 ea
RA014418	RA 34-3099X609	1.000 ea
EC1130A02SP	ELEC CAP, 130-156 MFD, 125V, 1.48D X 3.3	1.000 ea
NS2512A01	INSULATOR, CONDUIT BOX X	1.000 ea
34CB3002A	CB CAST W/.88 DIA HOLE	1.000 ea
34GS1029A01	GASKET, CONDUIT BOX	1.000 ea
51XB1016A07	10-16 X 7/16 HXWSSLD SERTYB	2.000 ea
11XW1032G06	10-32 X .38, TAPTITE II, HEX WSHR SLTD U	1.000 ea
51XW0832A07	8-32 X .44, TAPTITE II, HEX WSHR SLTD SE	2.000 ea
34EP3102A01SP	FR ENDPLATE, MACH	1.000 ea
34CB4800SP	CAPACITOR COVER, STAMPED PRIMED	1.000 ea
34GS3000SP	GASKET, CAPACITOR BOX	1.000 ea
51XB1016A05	10-16X5/16HX WA SL SR TYB (F/S)	2.000 ea
HW5100A03	WAVY WASHER (W1543-017)	1.000 ea
34EP3300A24SP	PU ENDPLATE, MACH	1.000 ea
51XN1032A20	10-32 X 1 1/4 HX WS SL SR	2.000 ea
34FN3002A01SP	EXTERNAL FAN, PLASTIC, .637/.639 HUB W/	1.000 ea
34FH4002A03SP	IEC FH NO GREASER W/.88 DIA SHAFT HOLE,	1.000 ea
51XW1032A06	10-32 X .38, TAPTITE II, HEX WSHR SLTD S	3.000 ea
WD4100A81	CAPLUG BPF-7/8, FOR .86-.88 HOLE	1.000 ea
34CB4517	CB LID 4 MTG HOLES .22 DIA STAMPED, FOR	1.000 ea
34GS1031A01	GASKET, FLAT CONDUIT BOX LID (LEXIDE)	1.000 ea
51XW0832A07	8-32 X .44, TAPTITE II, HEX WSHR SLTD SE	4.000 ea
RM1010A01	35-968-1 VINYL CLS	1.000 ea
MG1050G01	CELEROL MEDIUM CHARCOAL METALLIC GRAY	0.014 ga
85XU0407S04	4X1/4 U DRIVE PIN STAINLESS	2.000 ea
SP5051B59	MDL 34 TORQ STAT SW,TYPE L	1.000 ea
HA3100A12	THRUBOLT 10-32 X 7.375	4.000 ea
MN416A01	TAG-INSTAL-MAINT no wire (2500bx)4/22	1.000 ea
LB1118	LABEL,WARNING (ROLL LABEL)	1.000 ea
LC0031	CONNECTION LABEL	1.000 ea

NP1257L	ALUM UL CC THERMAL REV MTG	1.000 ea
34PA1002	PKG GRP, PRINT PK1001A01	1.000 ea
PK3083	STYROFOAM PACKING CRADLE	1.000 ea
PK3088	MICROFOAM, 8"X"8 PERF. SHEETS	1.000 ea

**Accessories**

<b>Part number</b>	<b>Description</b>	<b>Multiplier</b>
34-171	C FACE KIT	A8

**AC Induction Motor Performance Data**

Record # 57252

Typical performance - not guaranteed values

Winding: 34WGX609-R003		Type: 3416L	Enclosure: TEFC		
<b>Nameplate Data</b>			<b>230 V, 60 Hz: High Voltage Connection</b>		
Rated Output (HP)	.33	Full Load Torque	0.51 LB-FT		
Volts	115/230	Start Configuration	direct on line		
Full Load Amps	6/3	Breakdown Torque	1.9 LB-FT		
R.P.M.	3450	Pull-up Torque	1.2 LB-FT		
Hz	60 Phase	1	Locked-rotor Torque	1.4 LB-FT	
NEMA Design Code	N	KVA Code	M	Starting Current	16 A
Service Factor (S.F.)	1.75	No-load Current	2.4 A		
NEMA Nom. Eff.	0	Power Factor	0	Line-line Res. @ 25°C	4.84 Ω A Ph 3.7 Ω B Ph
Rating - Duty	40C	AMB-CONT	Temp. Rise @ Rated Load		
S.F. Amps	7.4/3.7	Temp. Rise @ S.F. Load			

**Load Characteristics 230 V, 60 Hz, 0.33 HP**

% of Rated Load	25	50	75	100	125	150	S.F.
Power Factor	40	49	57	64	70	75	82
Efficiency	28.6	44.7	52.4	60	60.3	61.9	60.9
Speed	3560	3544	3527	3508	3483	3460	3433
Line amperes	2.5	2.6	2.7	2.9	3.15	3.4	3.65

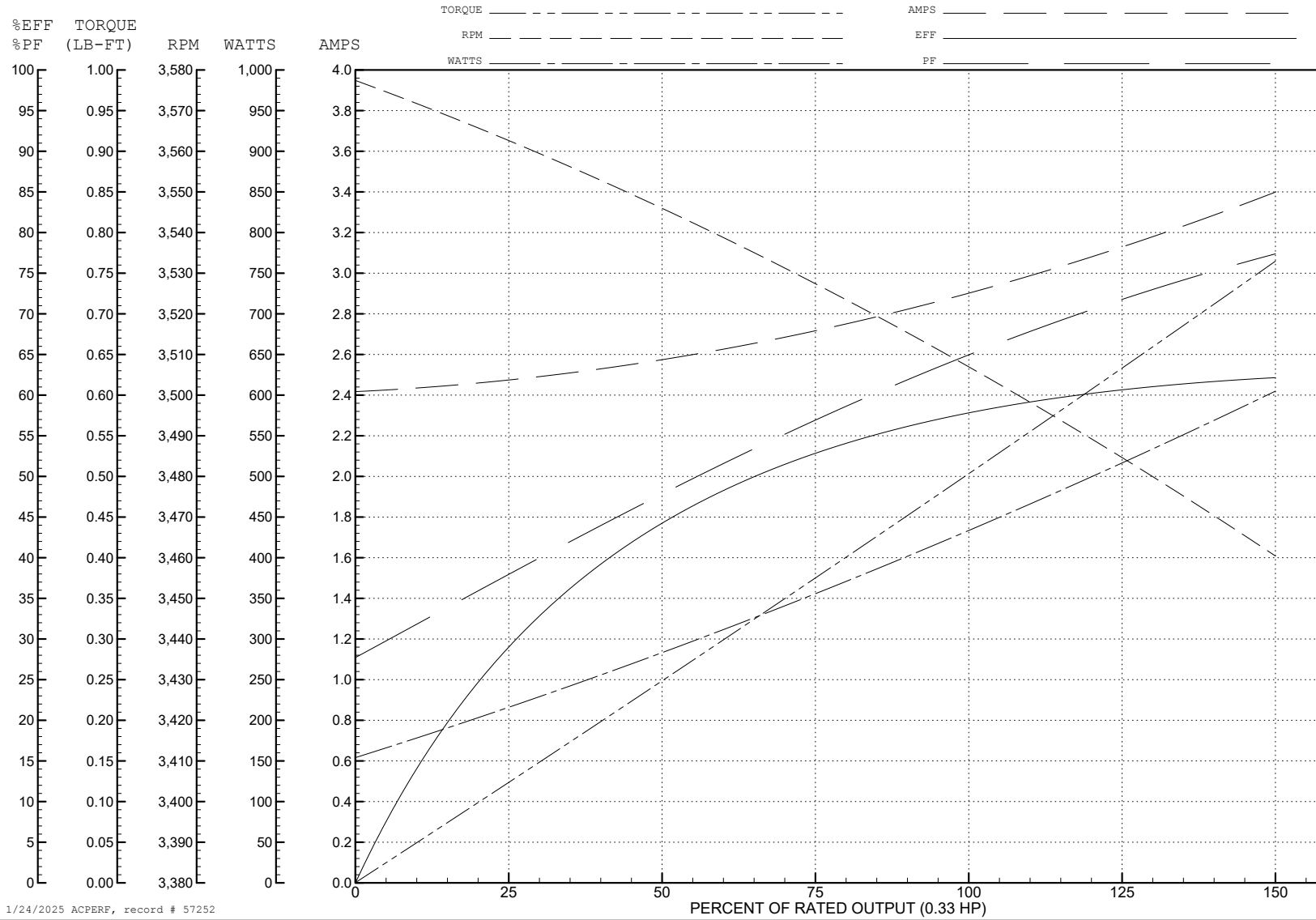
ABB Motors and Mechanical Inc.

WINDING # 34WGx609

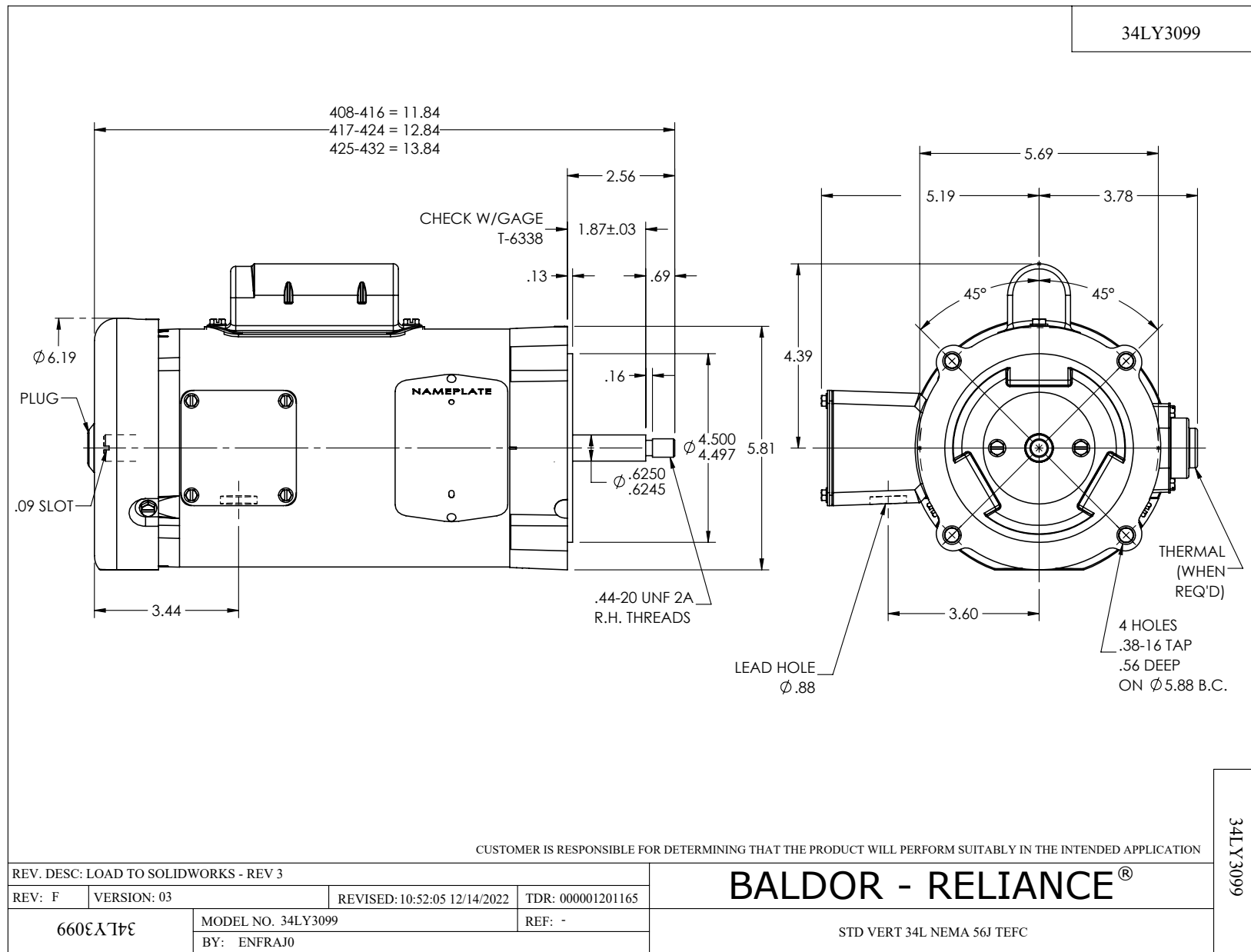
Typical performance - not guaranteed values.

0.33 HP 1 PH 60 HZ 3450 RPM 230 V 3416L

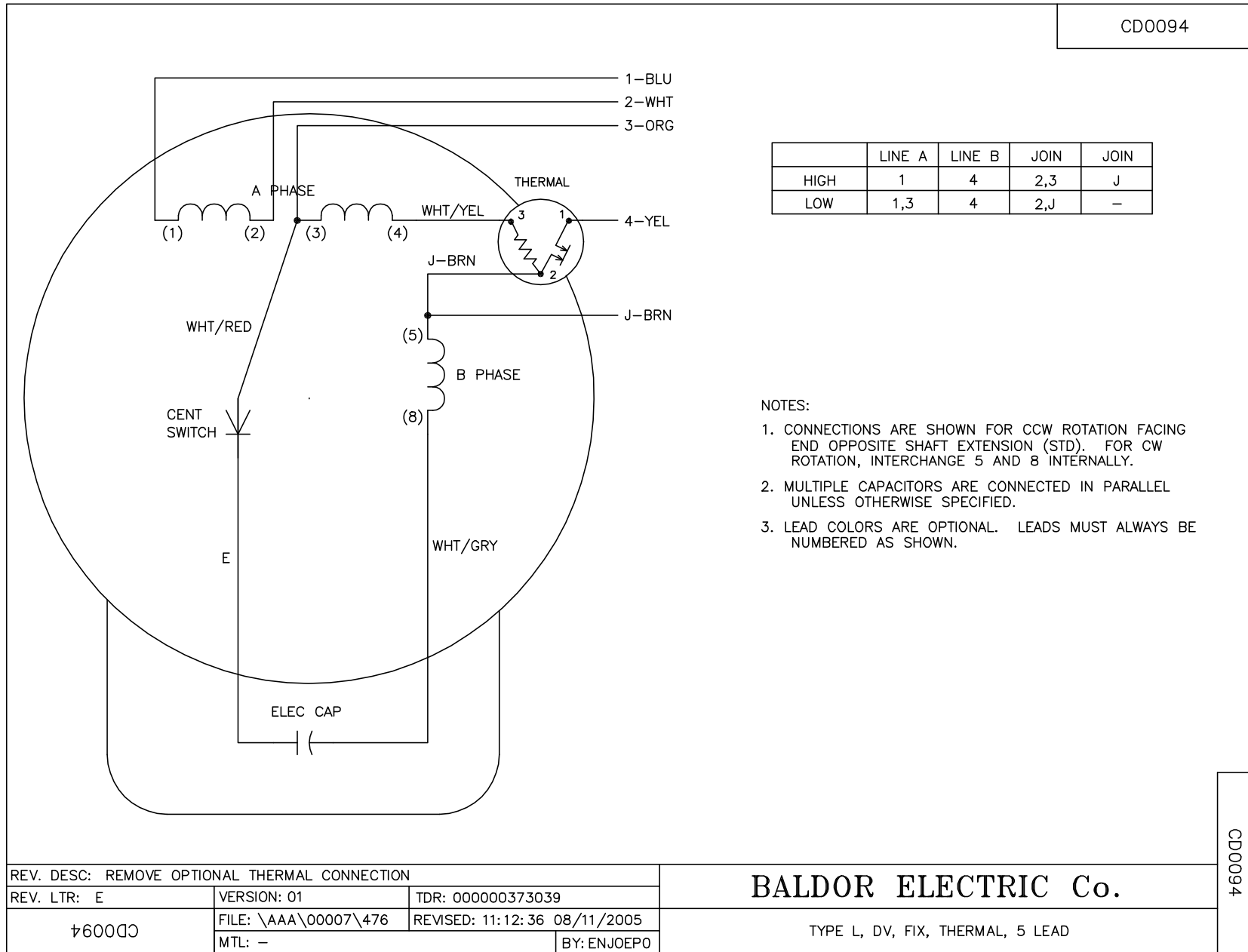
TORQUES (LB-FT): PO=1.9 PU=1.2 LR=1.4 LRA=16



1/24/2025 ACPERF, record # 57252



CD0094



REV. DESC: REMOVE OPTIONAL THERMAL CONNECTION		
REV. LTR: E	VERSION: 01	TDR: 000000373039
CD0094	FILE: \AAA\00007\476	REVISED: 11:12:36 08/11/2005
	MTL: -	BY: ENJOEPO

**BALDOR ELECTRIC Co.**

TYPE L, DV, FIX, THERMAL, 5 LEAD

CD0094