



Customer information packet

CJL3507A

.75HP, 1725RPM, 1PH, 60HZ, 56J, 3428LC, TEFC, F
MDS OF MICHIGAN INC
Class - None
Division - Not Applicable

Specifications

Enclosure	TEFC
Frame	56J
Frame Material	Steel
Frequency	60.00 Hz
Haz Area Class and Group	None
Haz Area Division	Not Applicable
Motor Letter Type	Cap Start, Cap Run
Output @ Frequency	.750 HP @ 60 HZ
Phase	1
Synchronous Speed @ Frequency	1800 RPM @ 60 HZ
Voltage @ Frequency	115.0 V @ 60 HZ 230.0 V @ 60 HZ
Agency Approvals	CSA UR
Ambient Temperature	40 °C
Auxillary Box	No Auxillary Box
Auxillary Box Lead Termination	None
Base Indicator	Rigid
Bearing Grease Type	Polyrex EM (-20F +300F)
Blower	None
Current @ Voltage	8.200 A @ 115.0 V 5.400 A @ 208.0 V 4.100 A @ 230.0 V
Design Code	N
Drip Cover	No Drip Cover
Duty Rating	CONT
Efficiency @ 100% Load	74.0 %
Electrically Isolated Bearing	Not Electrically Isolated
Feedback Device	NO FEEDBACK
Front Face Code	Standard
Front Shaft Indicator	None
Heater Indicator	No Heater

Part detail

Revision	G
Type	AC
Mech. spec.	34M631
Base	
Status	PRD/A
Elec. spec.	34WGW998
Layout	34LYM631
Eff. date	05-25-2024
CD Diagram	CD0308
Poles	04
Leads	4#18,1#16 #4TH
Proprietary	False
Created date	03-17-2015

High Voltage Full Load Amps	4.1 a
Insulation Class	B
Inverter Code	Not Inverter
KVA Code	L
Lifting Lugs	No Lifting Lugs
Locked Bearing Indicator	Locked Bearing
Motor Lead Exit	Ko Box
Motor Lead Quantity/Wire Size	4 @ 18 AWG
Motor Lead Termination	Flying Leads
Motor Standards	NEMA
Motor Type	3428LC
Mounting Arrangement	F1
Number of Poles	4
Overall Length	12.97 IN
Power Factor	80
Product Family	General Purpose
Pulley End Bearing Type	Ball
Pulley Face Code	C-Face
Pulley Shaft Indicator	Ext Thread
Rodent Screen	None
Service Factor	1.25
Shaft Diameter	0.625 IN
Shaft Extension Location	Pulley End
Shaft Ground Indicator	No Shaft Grounding
Shaft Rotation	Fixed Opposite Standard
Shaft Slinger Indicator	No Slinger
Speed	1725 rpm
Speed Code	Single Speed
Starting Method	Direct on line
Thermal Device - Bearing	None
Thermal Device - Winding	None
Vibration Sensor Indicator	No Vibration Sensor
Winding Thermal 1	Automatic Thermal Overload
Winding Thermal 1 Location	SB

Nameplate

NP1257L									
CAT.NO.	CJL3507A								
SPEC.	34M631W998								
HP	.75								
VOLTS	115/230								
AMP	8.2/4.1								
RPM	1725								
FRAME	56J			HZ	60		PH	1	
SER.F.	1.25	CODE	L	DES	N	CL	B		
NEMA-NOM-EFF	74	PF	80						
RATING	40C AMB-CONT								
CC									
DE	6203	ODE	6203						
ENCL	TEFC	SN							
	SFA 9.8/4.9								

Parts list

Part number	Description	Quantity
SA295430	SA 34M631W998	1.000 ea
RA281494	RA 34M631W998	1.000 ea
OC3020F12SP	CAPACITORS 20 MFD 370 VAC	1.000 ea
EC1460A05SP	ELEC CAP, 460-552 MFD, 125V, 2.06D X 3.	1.000 ea
NS2512A01	INSULATOR, CONDUIT BOX X	1.000 ea
34CB3002A	CB CAST W/.88 DIA HOLE	1.000 ea
34GS1029A01	GASKET, CONDUIT BOX	1.000 ea
51XB1016A07	10-16 X 7/16 HXWSSLD SERTYB	2.000 ea
11XW1032G06	10-32 X .38, TAPTITE II, HEX WSHR SLTD U	1.000 ea
51XW0832A07	8-32 X .44, TAPTITE II, HEX WSHR SLTD SE	2.000 ea
34EP3102A01SP	FR ENDPLATE, MACH	1.000 ea
NS2501A02	INSULATOR, CAPACITOR BOX	1.000 ea
34CB3801	CAPACITOR BOX, DIE CAST	1.000 ea
34GS3002	GASKET, CAPACITOR BOX	1.000 ea
51XB1214A08	12-14 X 1/2HX WS SL SR TYBX	2.000 ea
HW5100A03	WAVY WASHER (W1543-017)	1.000 ea
34EP3300A24SP	PU ENDPLATE, MACH	1.000 ea
51XN1032A20	10-32 X 1 1/4 HX WS SL SR	2.000 ea
34FN3002A01SP	EXTERNAL FAN, PLASTIC, .637/.639 HUB W/	1.000 ea
34FH4002A03SP	IEC FH NO GREASER W/.88 DIA SHAFT HOLE,	1.000 ea
51XW1032A06	10-32 X .38, TAPTITE II, HEX WSHR SLTD S	3.000 ea
WD4100A81	CAPLUG BPF-7/8, FOR .86-.88 HOLE	1.000 ea
34CB4517	CB LID 4 MTG HOLES .22 DIA STAMPED, FOR	1.000 ea
34GS1031A01	GASKET, FLAT CONDUIT BOX LID (LEXIDE)	1.000 ea
51XW0832A07	8-32 X .44, TAPTITE II, HEX WSHR SLTD SE	4.000 ea
LB1009N	LABEL,ROTATION DIRECTION (ON ROLLS)	1.000 ea
RM1010A01	35-968-1 VINYL CLS	1.000 ea
34GS5003A01	FOAM SLEEVE, ID = 2 1/16" X 4 3/8"	1.000 ea
MG1050G01	CELEROL MEDIUM CHARCOAL METALLIC GRAY	0.014 ga
85XU0407S04	4X1/4 U DRIVE PIN STAINLESS	2.000 ea
SP5051B55	MODEL 34 TYPE LC STATIONARY SWITCH	1.000 ea

HA3100A37	THRUBOLT 10-32 X 8.500	4.000 ea
MN416A01	TAG-INSTAL-MAINT no wire (2500bx)4/22	1.000 ea
LB1118	LABEL,WARNING (ROLL LABEL)	1.000 ea
LC0031	CONNECTION LABEL	1.000 ea
NP1257L	ALUM UL CC THERMAL REV MTG	1.000 ea
35PA1066	PKG GRP, PRINT PK1008A06	1.000 ea

Accessories

Part number	Description	Multiplier
34-171	C FACE KIT	A8

AC Induction Motor Performance Data

Record # 7176

Typical performance - not guaranteed values

Winding: 34WGW998-R001		Type: 3428LC	Enclosure: TEFC	
Nameplate Data			230 V, 60 Hz: High Voltage Connection	
Rated Output (HP)	.75	Full Load Torque	2.25 LB-FT	
Volts	115/230	Start Configuration	direct on line	
Full Load Amps	8.2/4.1	Breakdown Torque	5.7 LB-FT	
R.P.M.	1725	Pull-up Torque	4.7 LB-FT	
Hz	60 Phase	Locked-rotor Torque	7.5 LB-FT	
NEMA Design Code	N KVA Code	Starting Current	31 A	
Service Factor (S.F.)	1.25	No-load Current	2.7 A	
NEMA Nom. Eff.	74 Power Factor	Line-line Res. @ 25°C	3.11 Ω A Ph 1.73 Ω B Ph	
Rating - Duty	40C AMB-CONT	Temp. Rise @ Rated Load	62°C	
S.F. Amps	9.8/4.9	Temp. Rise @ S.F. Load	81°C	

Load Characteristics 230 V, 60 Hz, 0.75 HP

% of Rated Load	25	50	75	100	125	150	S.F.
Power Factor	43	61	72	80	85	87	0
Efficiency	53.6	67.7	73	73.9	93.2	71.4	0
Speed	1784	1770	1755	1739	1717	1694	0
Line amperes	2.7	3	3.5	4.1	4.9	5.8	4.9

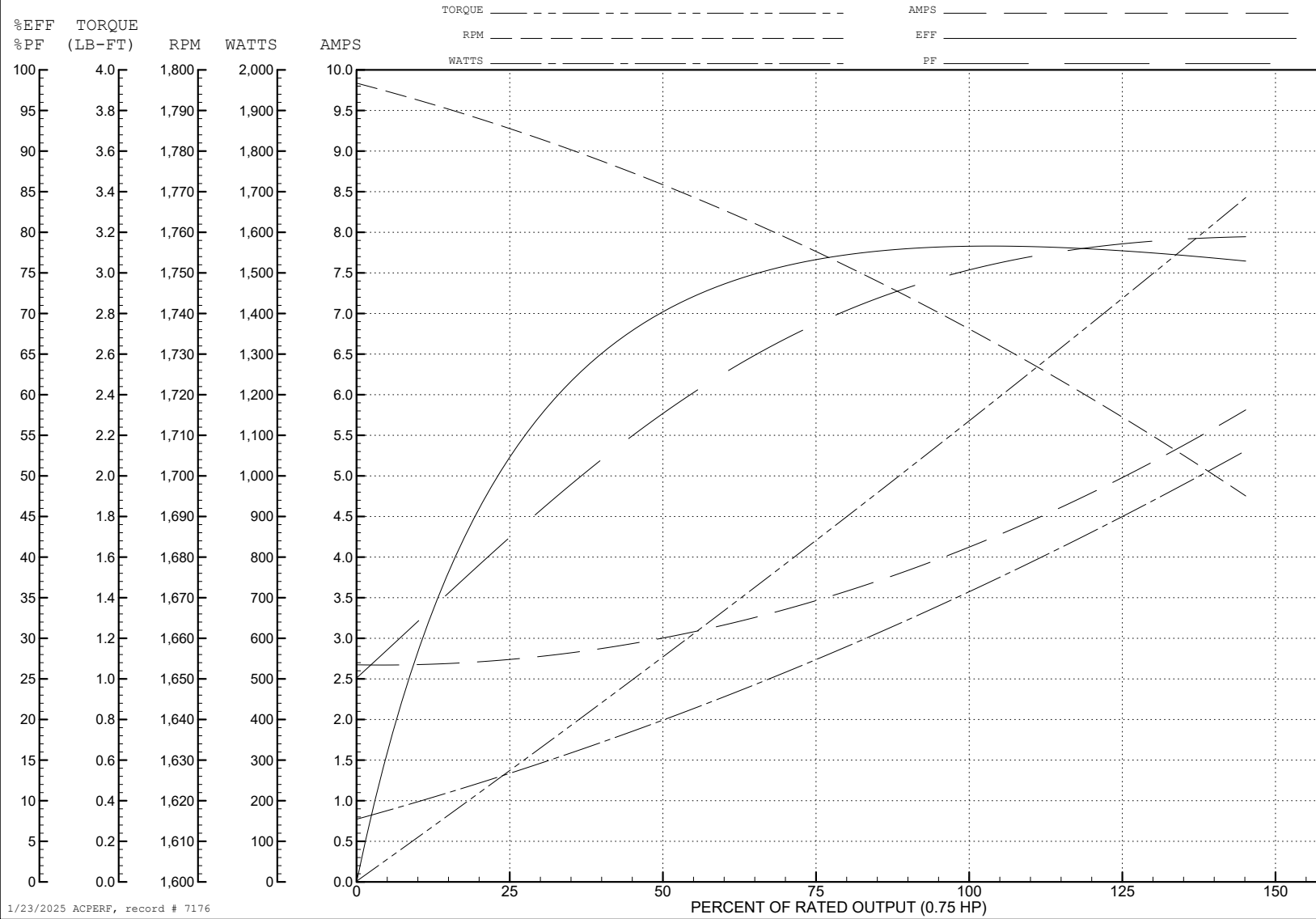
ABB Motors and Mechanical Inc.

WINDING # 34WGW998

0.75 HP 1 PH 60 HZ 1725 RPM 230 V 3428LC

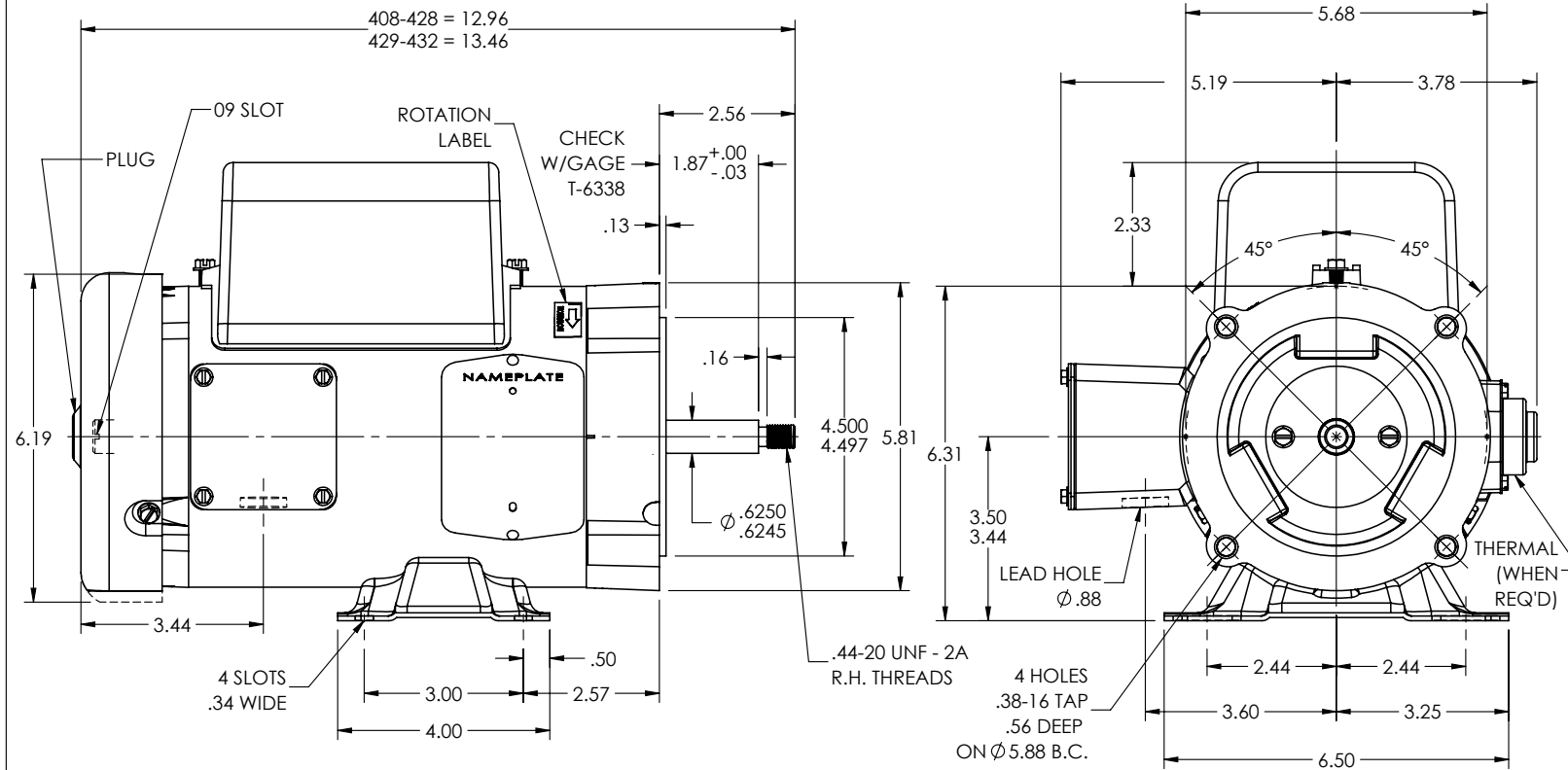
Typical performance - not guaranteed values.

TORQUES (LB-FT): PO=5.7 PU=4.7 LR=7.5 LRA=31



1/23/2025 ACPERF, record # 7176

34LYM631



CUSTOMER IS RESPONSIBLE FOR DETERMINING THAT THE PRODUCT WILL PERFORM SUITABLY IN THE INTENDED APPLICATION

REV. DESC: LOAD TO SOLIDWORKS - REV "-"

REV: A	VERSION: 01	REVISED: 08:25:20 12/21/2022	TDR: 000001201165
--------	-------------	------------------------------	-------------------

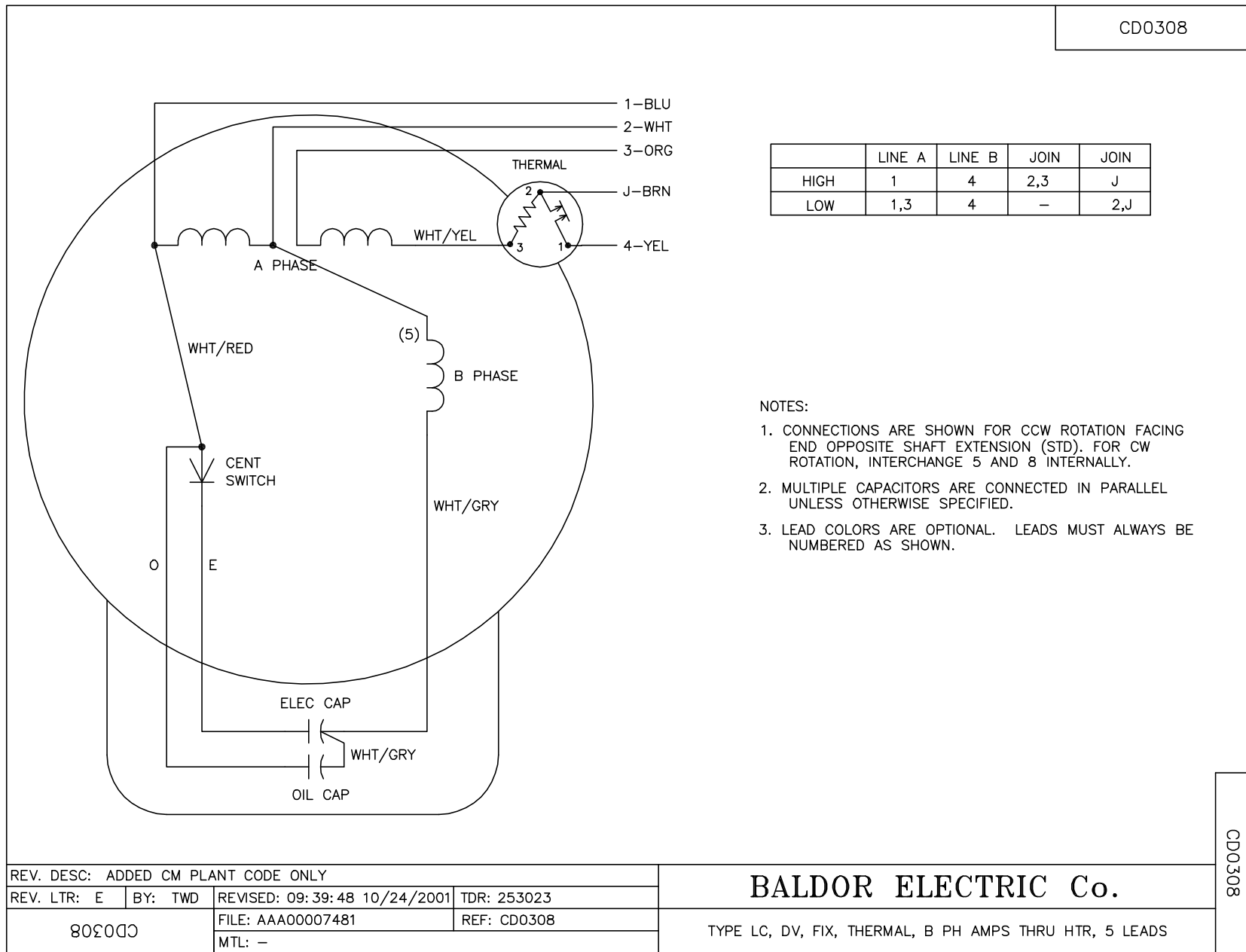
34LYM631	MODEL NO. 34LYM631	REF: -
	BY: ENFRAJ0	

BALDOR - RELIANCE®

SPL HORZ 34LC NEMA 56J TEFC W/SPL STACK LGTHS.

34LYM631

CD0308



	LINE A	LINE B	JOIN	JOIN
HIGH	1	4	2,3	J
LOW	1,3	4	-	2,J

NOTES:

1. CONNECTIONS ARE SHOWN FOR CCW ROTATION FACING END OPPOSITE SHAFT EXTENSION (STD). FOR CW ROTATION, INTERCHANGE 5 AND 8 INTERNALLY.
2. MULTIPLE CAPACITORS ARE CONNECTED IN PARALLEL UNLESS OTHERWISE SPECIFIED.
3. LEAD COLORS ARE OPTIONAL. LEADS MUST ALWAYS BE NUMBERED AS SHOWN.

REV. DESC: ADDED CM PLANT CODE ONLY			
REV. LTR: E	BY: TWD	REVISED: 09:39:48 10/24/2001	TDR: 253023
803000		FILE: AAA00007481	REF: CD0308
		MTL: -	

BALDOR ELECTRIC Co.

TYPE LC, DV, FIX, THERMAL, B PH AMPS THRU HTR, 5 LEADS

CD0308